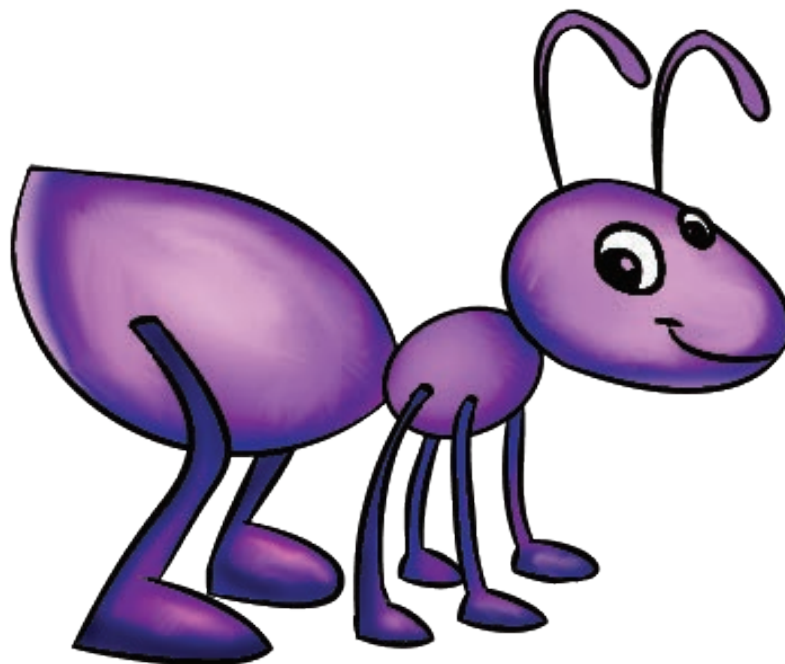


A



a

ant

A



a

ambulance

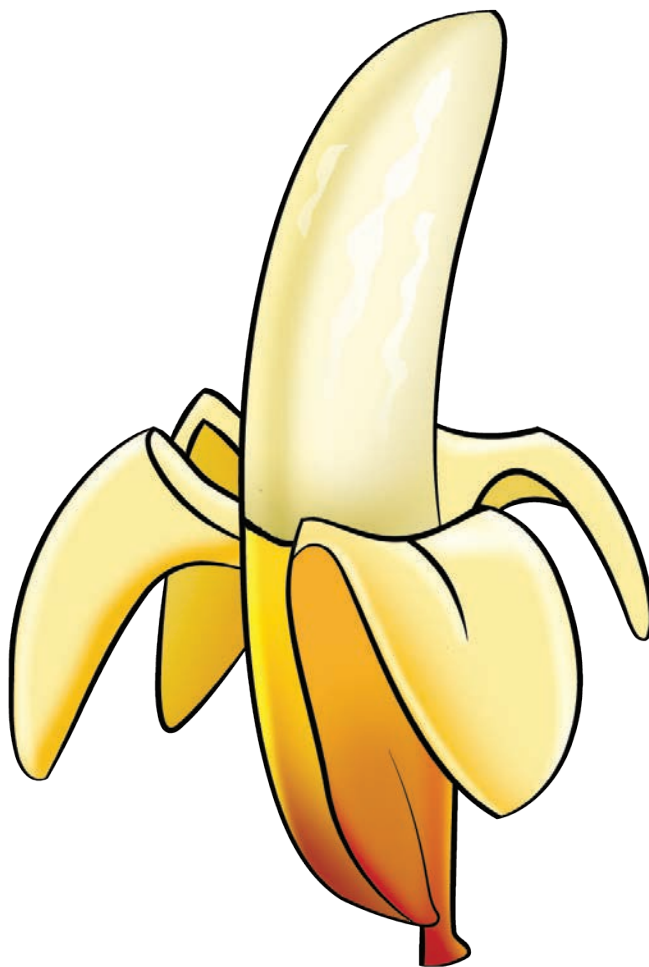
B



b

bee

B



b

banana

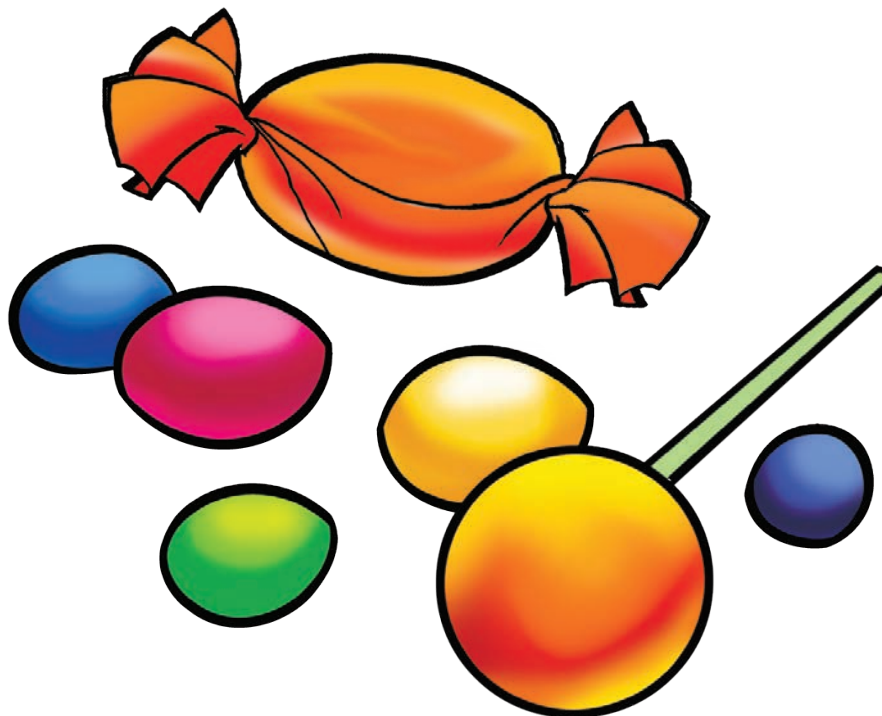
C



C

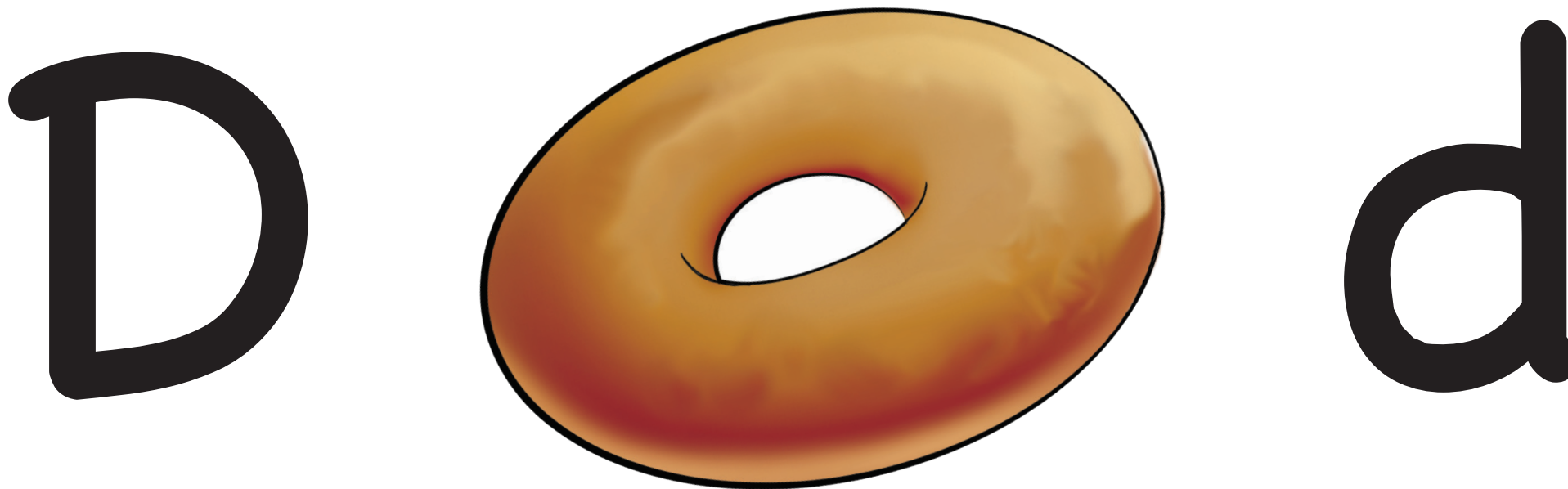
cold

C



C

candy



donut

D

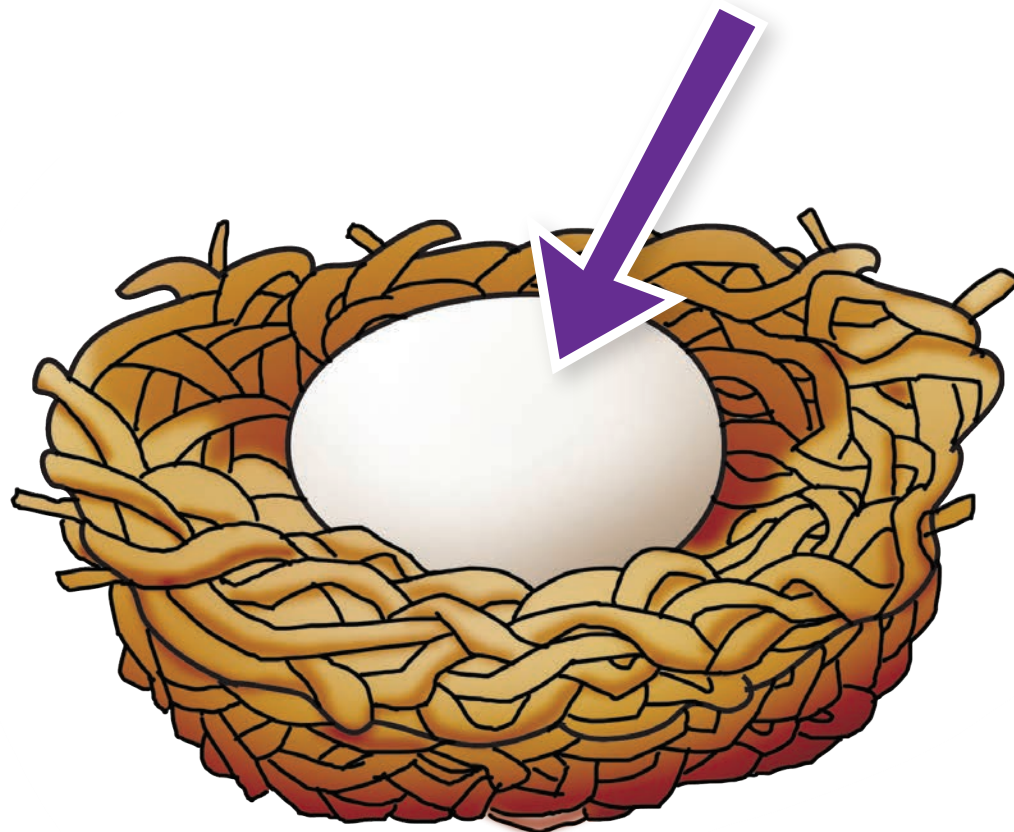


d

dinosaur



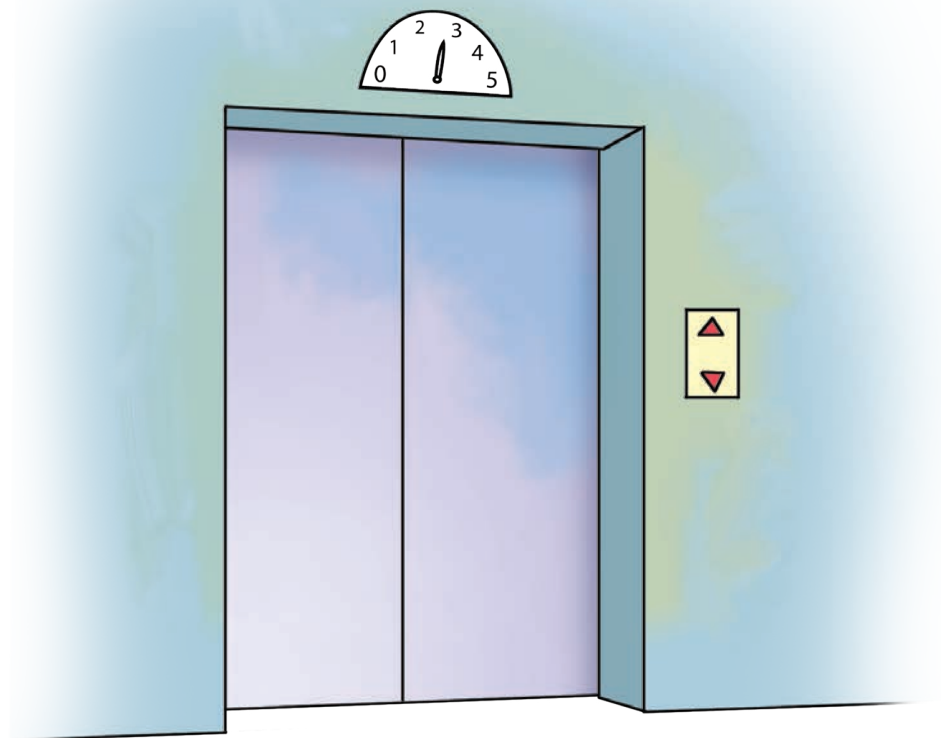
E



e

egg

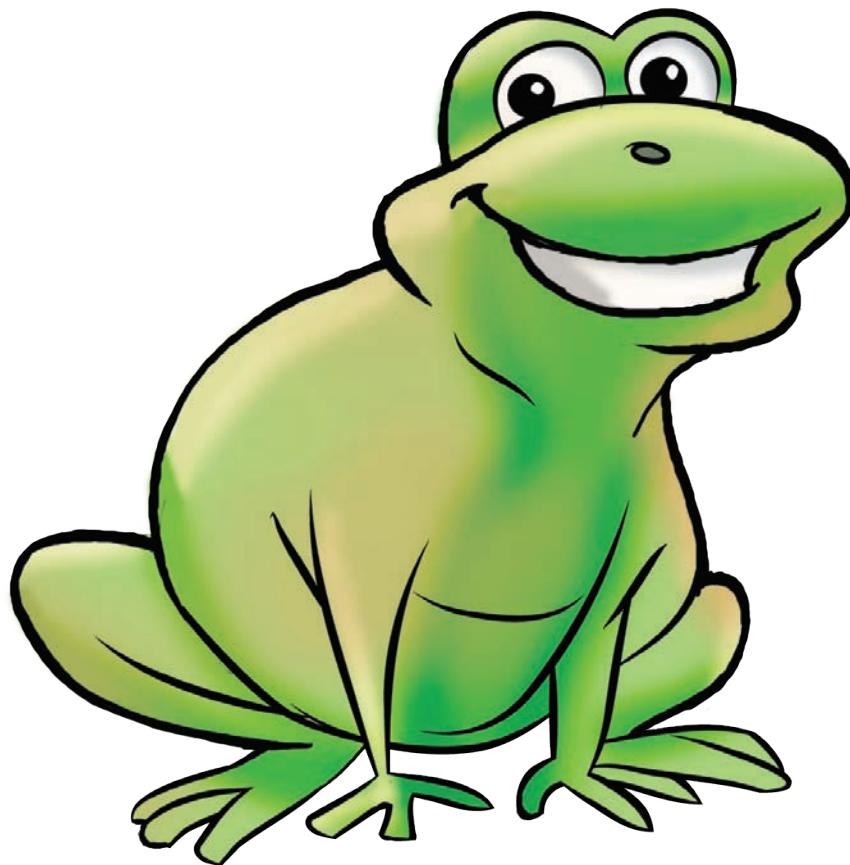
E



e

elevator

F



f

frog

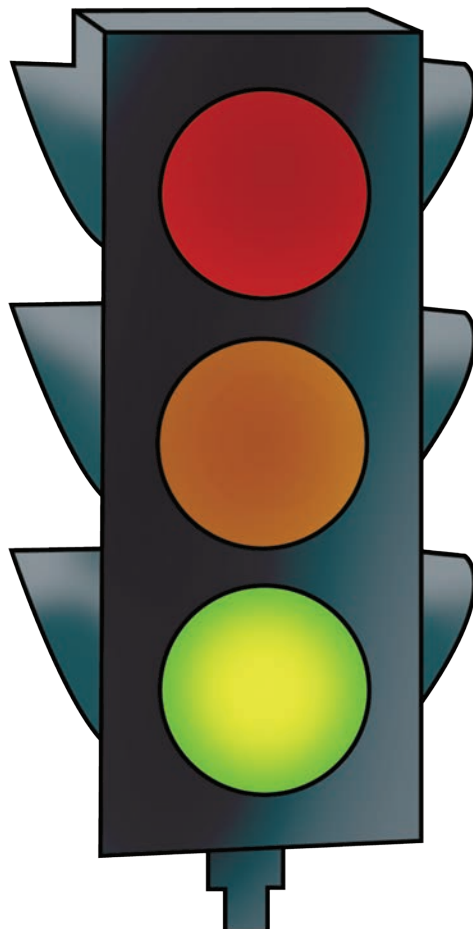
F



f

foot

G



g

go

G



g

guitar

H



h

house

H

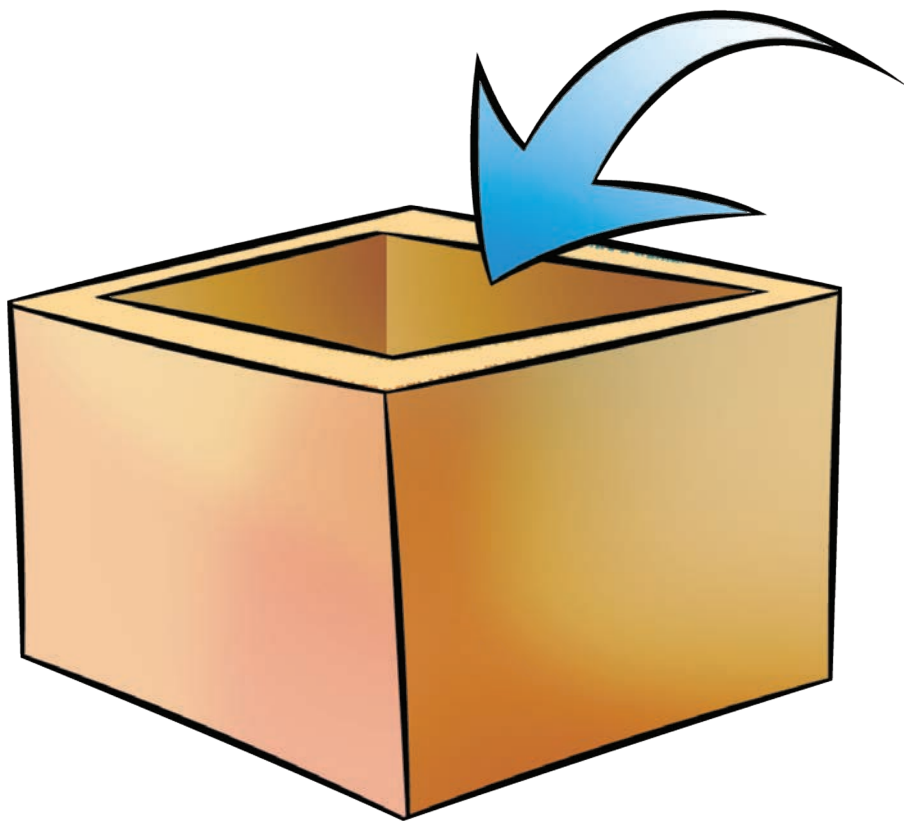


h

helicopter



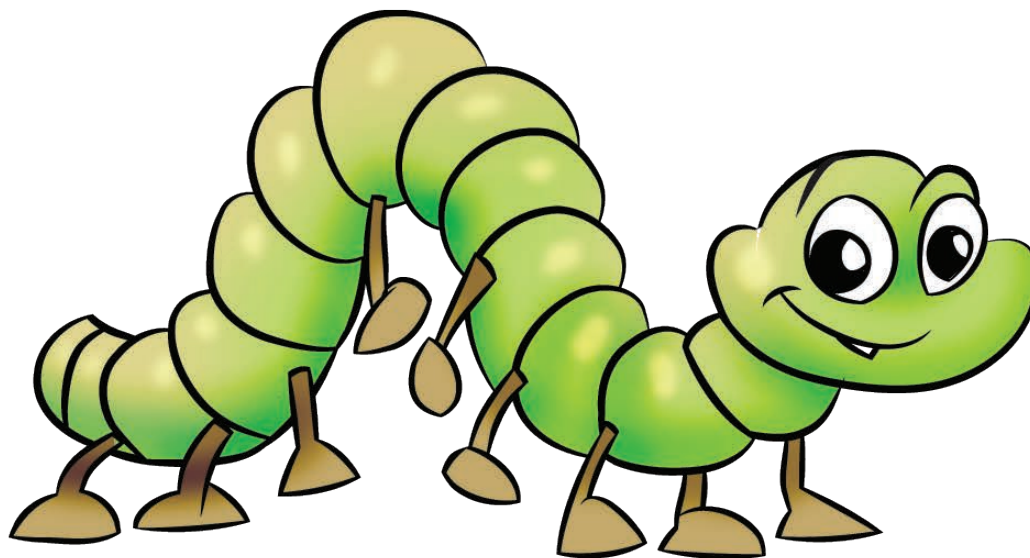
I



i

in

I



i

inchworm

J



j

jam

J



j

juice

K



k

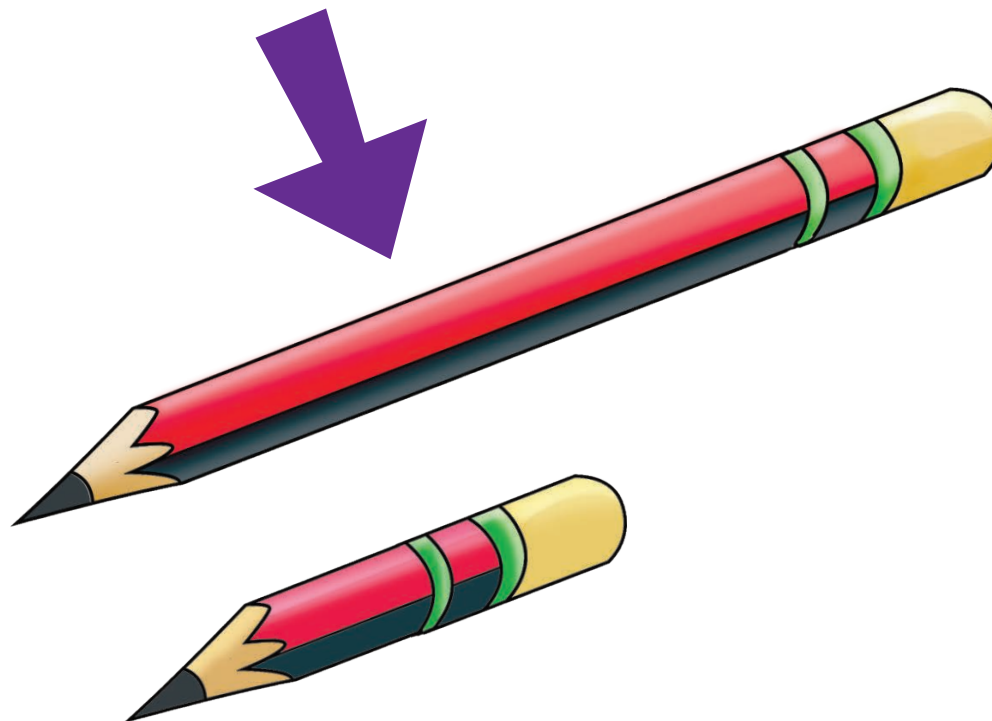
kick

K



K

koala



long

L



l

ladybug



M



m

moon

M



m

monster

N



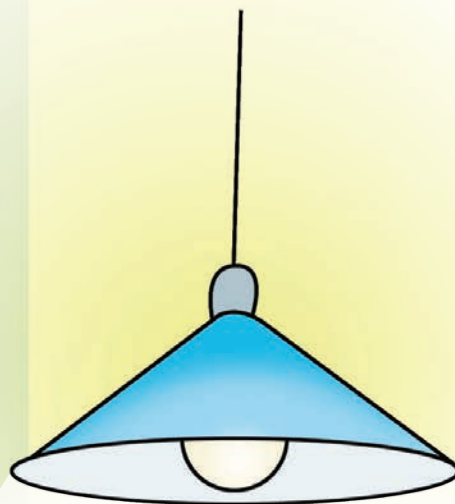
n

no

N 9 n

nine

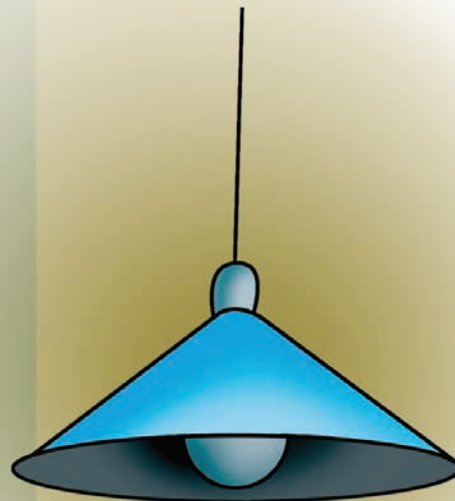
O



O

on

O



O

off

P



p

pirate

P



p

penguin



Q



q

quack

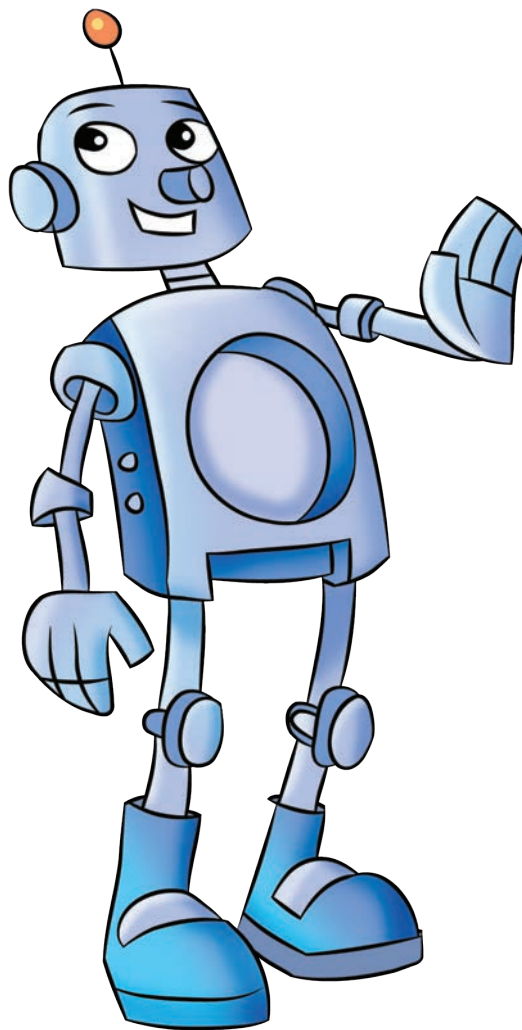
Q



q

question

R



r

robot

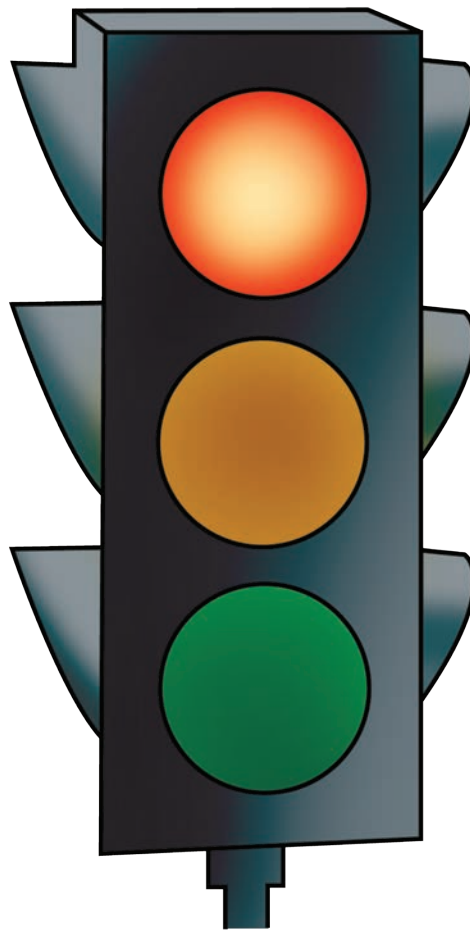
R



r

rainbow

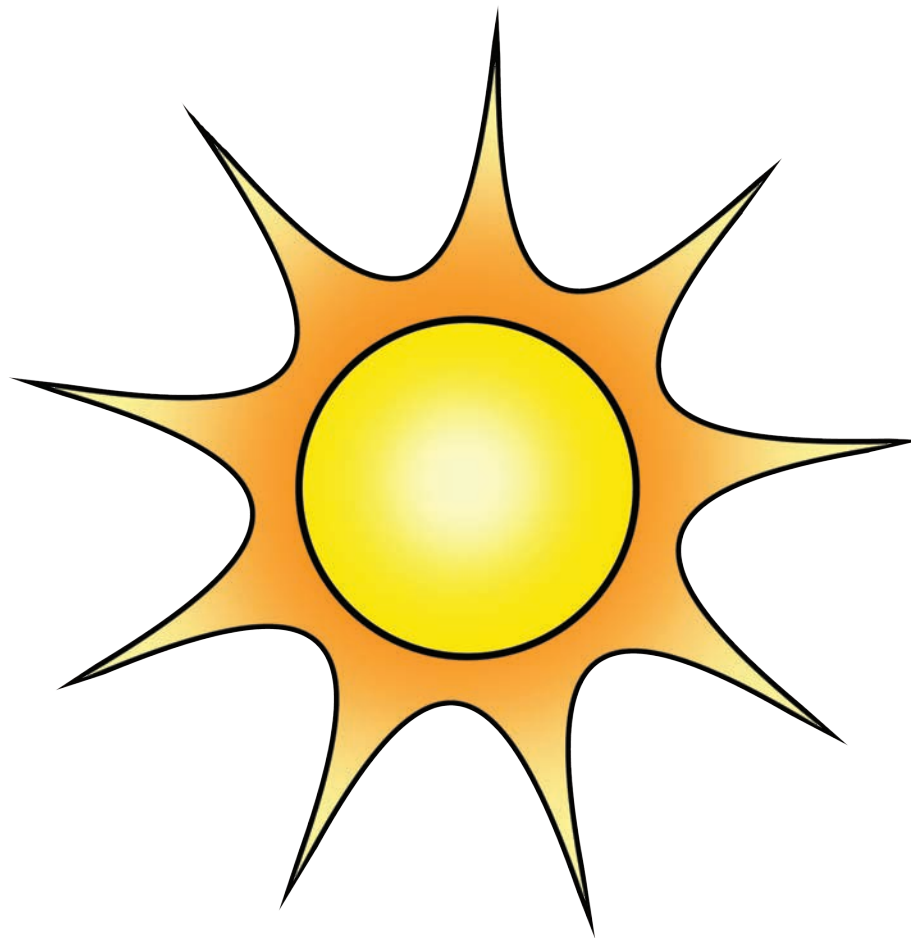
S



S

stop

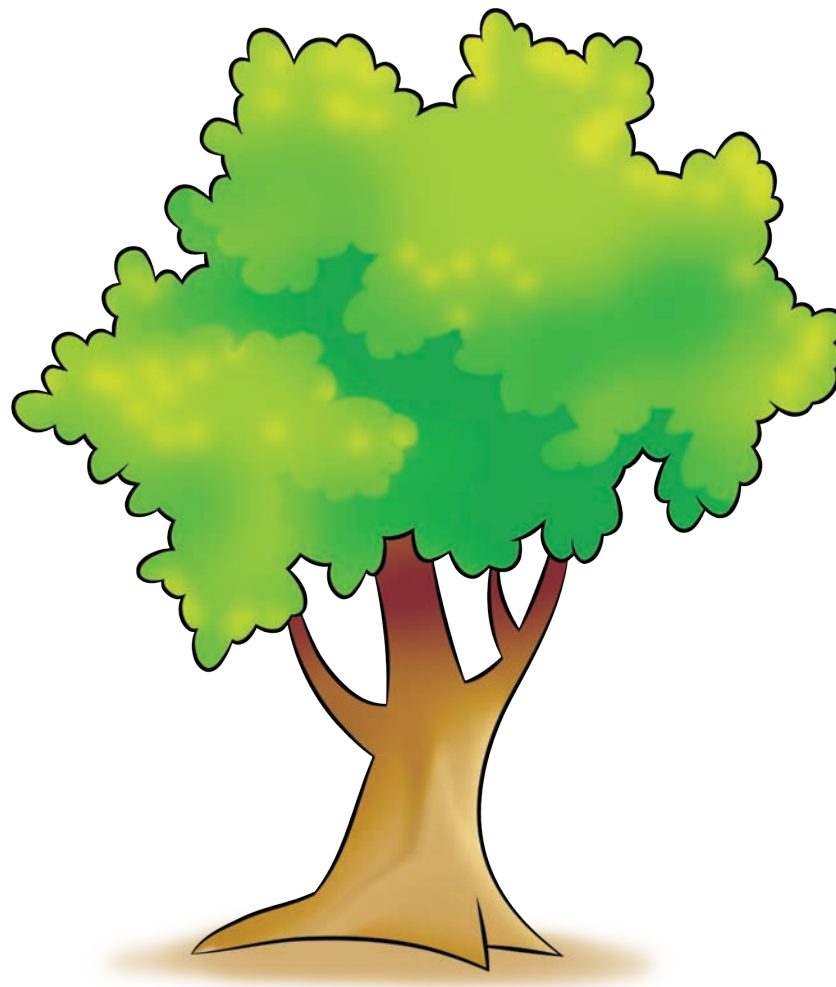
S



S

sun

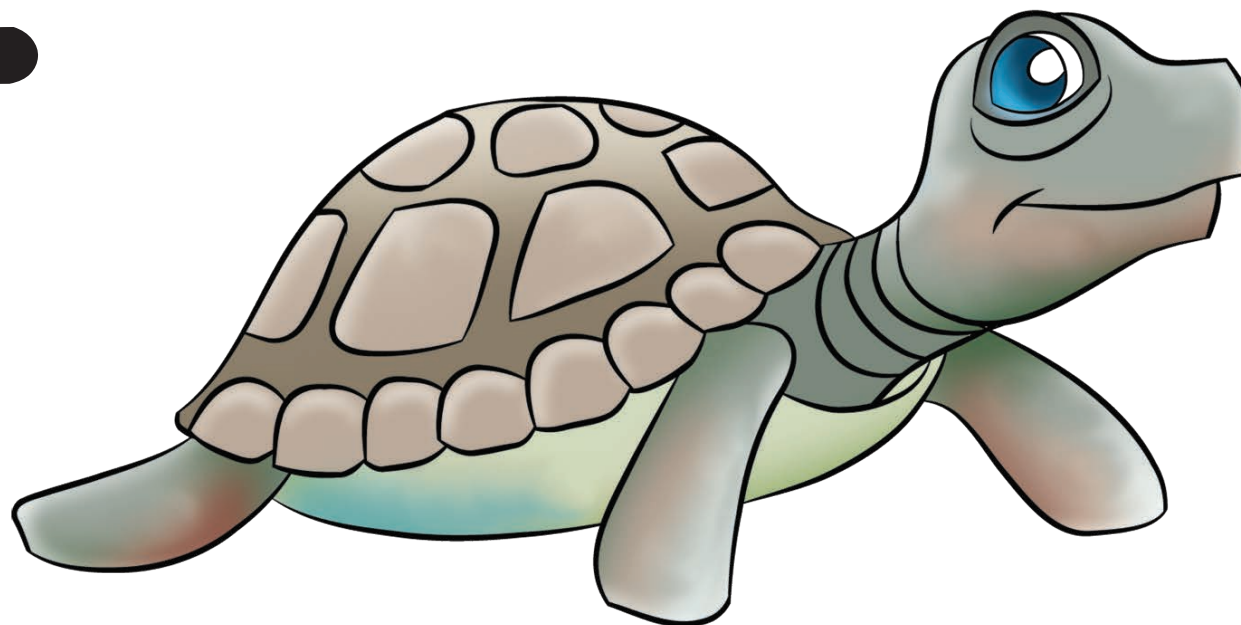
T



t

tree

T

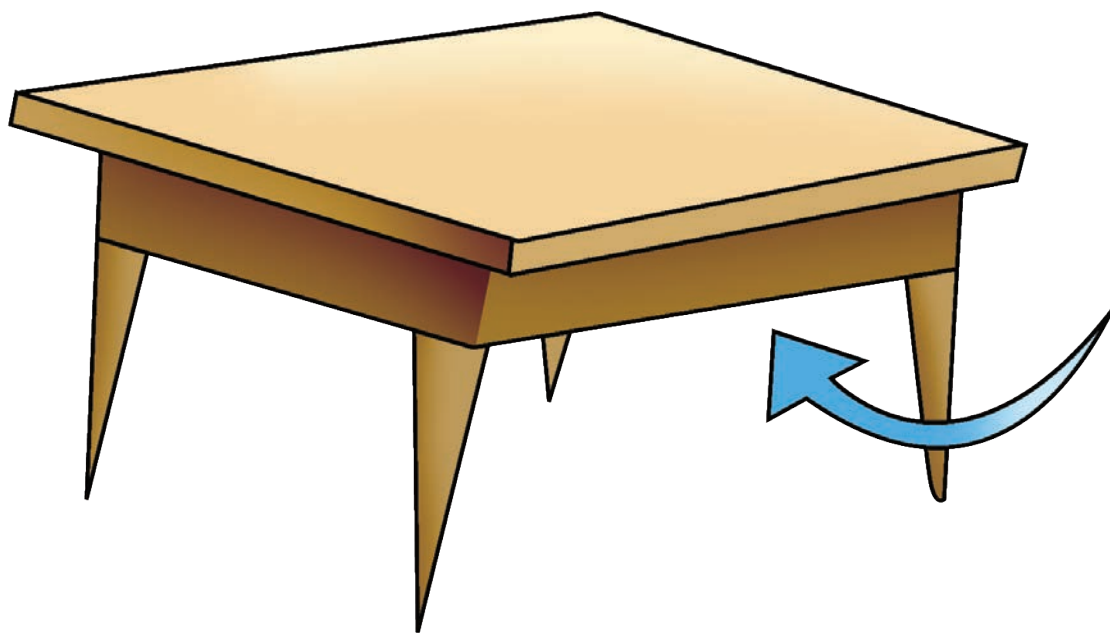


t

turtle



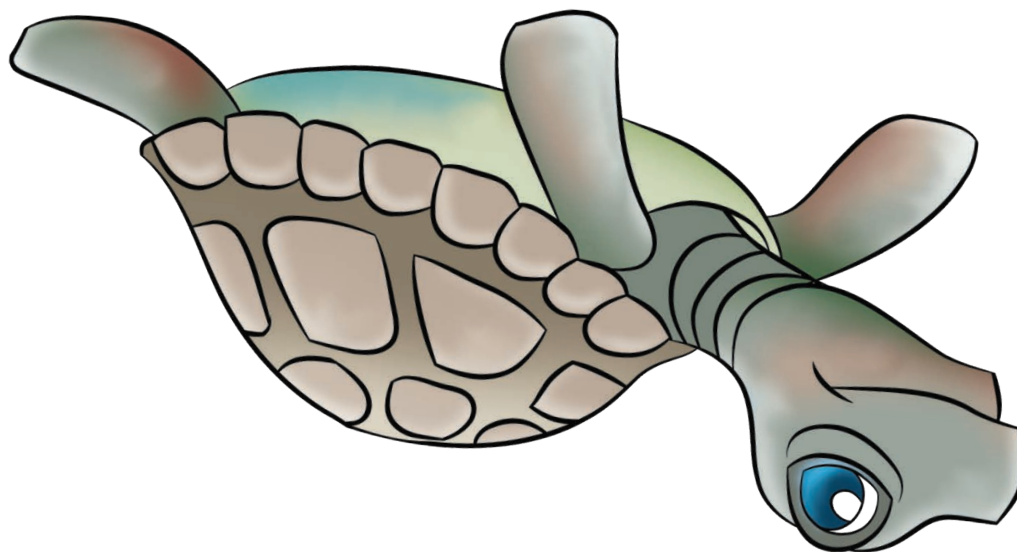
U



u

under

U



u

upside down

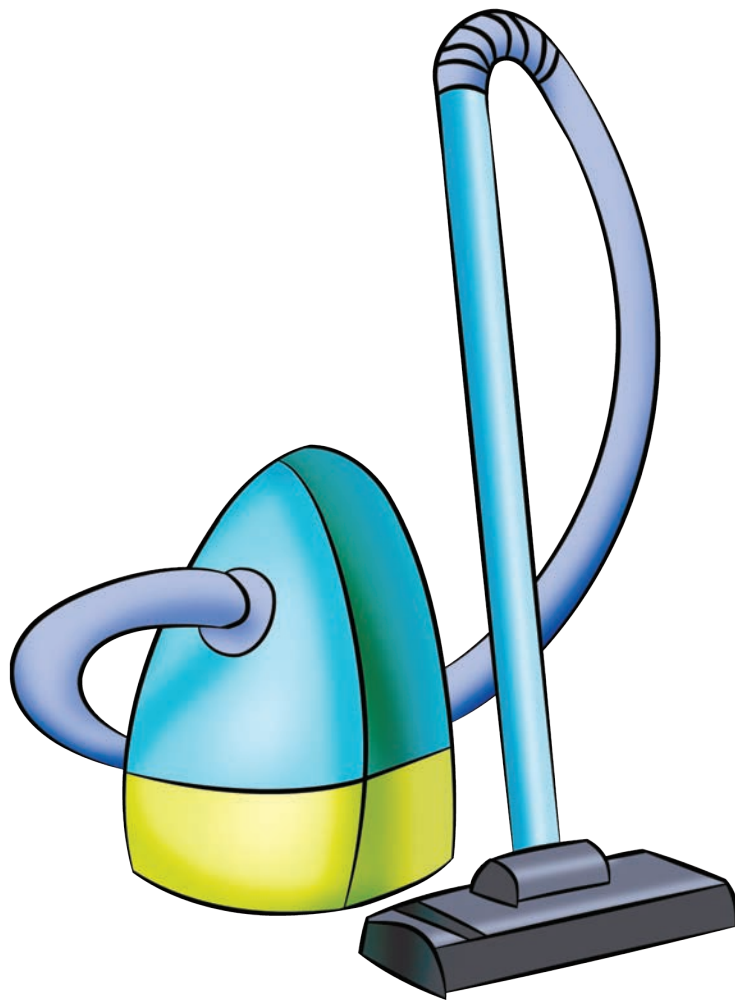
V



V

very good

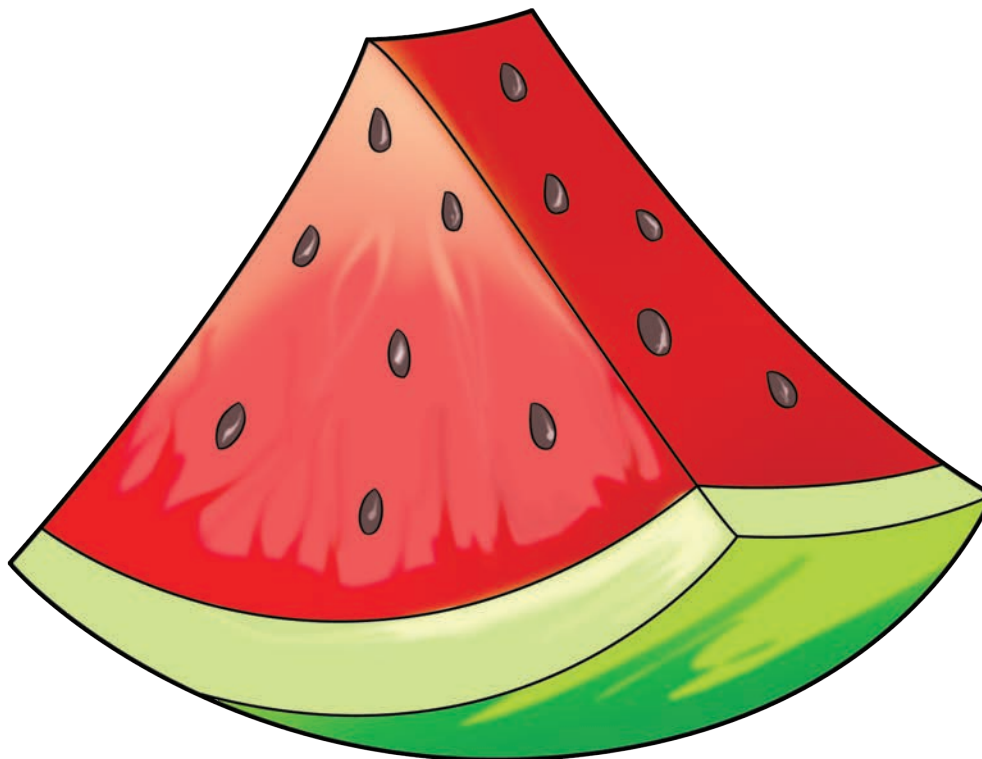
V



v

vacuum

W



w

watermelon

W



w

witch



mix



six



Y



y

yucky

Y



y

yes

Z



z

zig zag

Z



Z

zero